

2010 Winter Training Banner Songs

Banner 1



All hu - man be - ings need the in - com - p'ra - ble God, the



com - ing Christ, the glo - ry of Je - ho - vah as the



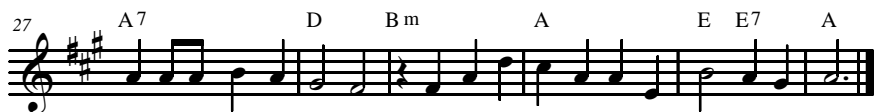
cen - ter of the gos - pel, the cen - ter of the gos - pel for the new cre -



a - tion, the liv - ing and a - bid - ing word of God for re - gen - er -



a - tion to have e - ter - nal life, and the man - i - fes - ta -



tion of the Lord Je - ho - vah, the rev - e - la - tion of the Lord Je - sus Christ.

Banner 2

C m A^b E^b B^b




We must deal with our flesh by the Spir - it of life, we must

6 C m A^b E^b B^b



deal with our flesh by the Spir - it of life, give

10 E^b B^b/_D A^b/_C E^b/_{B^b} A^b



up the world and turn to God by the love of the

15 B^b E^b E^b/_{D^b} A^b/_C



Fa - ther, de-feat Sa-tan through the word of the Son, and

22 E^b E^b/_{B^b} B^b E^b/_{D^b}



pass through death to die to the self by the pow-er of res-ur -

28 A^b E^b B^b E^b



rec-tion for the Bo - dy, for the Bo - dy of Christ.

Banner 3

F B \flat F F Dm



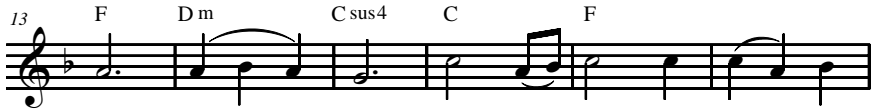
All who are in Christ and who are one with

7 C sus4 C F F7 B \flat Gm



Christ to re-lease God's peo-ple and to build up God's house

13 F Dm C sus4 C F



and His king-dom are ser-vants of Je-

19 F7 B \flat Gm F



ho-vah — a great cor-p'rate Christ, the same

26 C F B \flat F C F



as the in-di-vid-u-al Christ in be-ing the ser-vant of God.

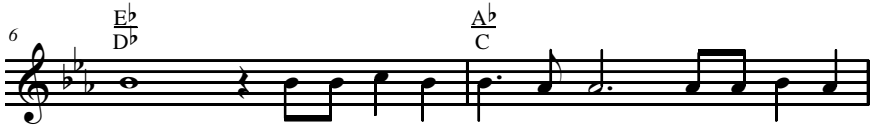
Banner 4



God wants us to learn one les - son — to stop our



do - ing, tak-ing Christ as our re - place - ment, and to keep a -



way from the taste of an - y - thing, from the taste of



an - y - thing oth - er than Christ, oth - er than Christ.

Banner 5

E^b G m A^b E^b



The Lord Je - ho - vah de - sires, de - sires to

7 G m A^b B^b A^b/_C B^b/_D



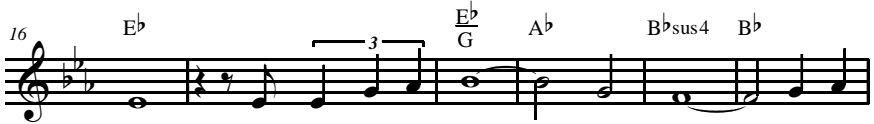
have as His dwell - ing place a group of peo - ple in - to

12 E^b C m A^b B^b



whom He can en - ter, in - to whom He can en -

16 E^b E^b/_G A^b B^b sus 4 B^b



ter — the church as a house of prayer and the

22 E^b/_G A^b E^b/_{B^b} B^b A^b/_C B^b/_D



house of His beau - ty, where the glo - ry of God, where the

28 E^b A^b E^b B^b E^b



glo - ry of God, the glo - ry of God will be seen.

Banner 6



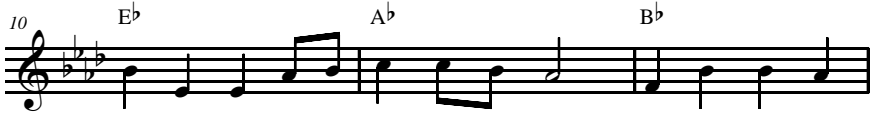
The be - liev - ers' en - joy - ment and pro - claim - ing of Christ as the



ju - bi - lee of God's grace will is - sue in the full en -



joy - ment of Christ as the ju - bi - lee in the mil - len - ni - um and



in the full - est en - joy - ment of Christ in the New Je -



ru - sa - lem, in the New Je - ru - sa -



lem in the new heav - en and new earth.